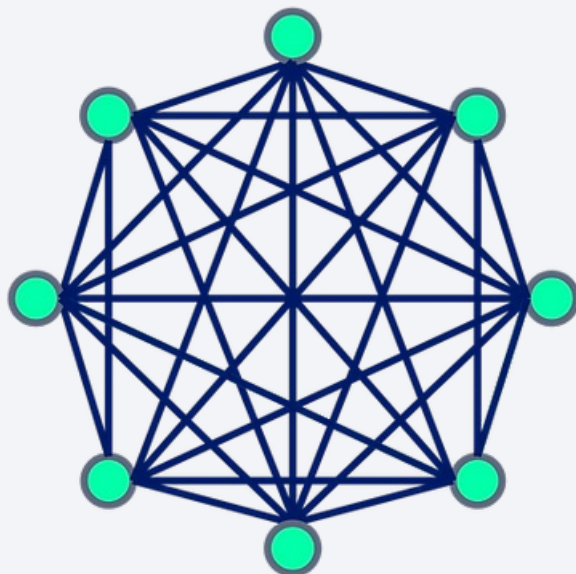


Cyberthentic DataMagic™



BROCHURE

Protect Sensitive Data Between Applications

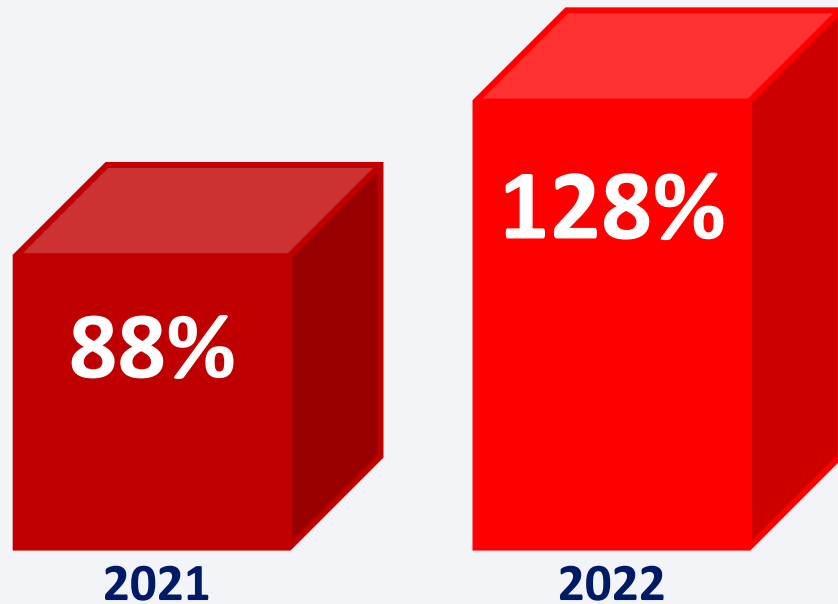
July 2023

Cyberthentic INC

www.cyberthentic.com

Introduction

Growth of cyberattacks on web applications and integrations



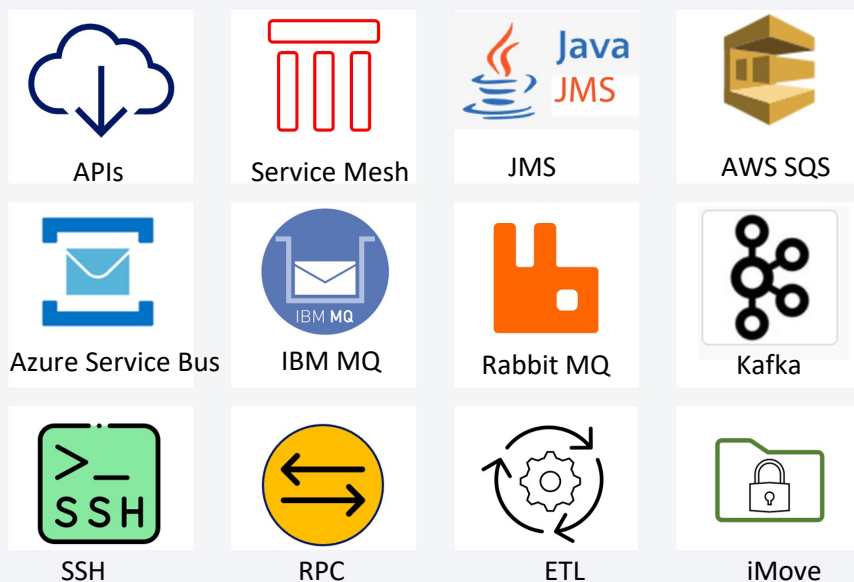
Today's businesses are rapidly automating operations. They connect key applications internally and externally, flooding integration points with sensitive data.

Criminals are giving lots of attention to application integrations and attacks against them are surging. The situation is expected to worsen when criminals leverage AI.

Without new ways to secure the data between applications, AI-enabled cyberattacks that cripple or destroy businesses could explode.

SOURCE: www.radware.com

The Problem



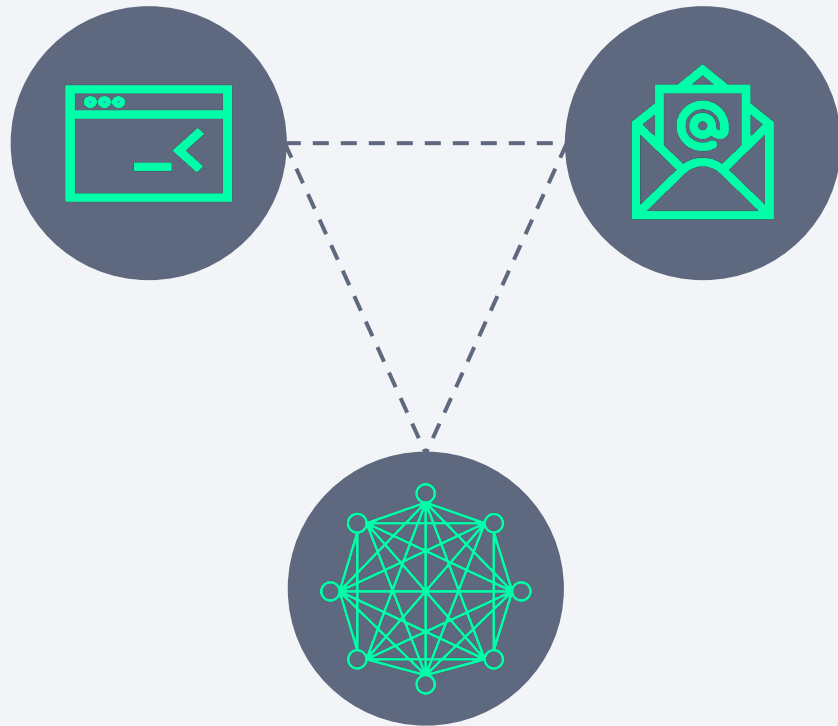
82% of data breaches are caused by humans—data theft, phishing, errors.

Leading application integration solutions collect, store, use and expose sensitive data to humans.

What if you could integrate applications to exchange sensitive data without exposing any of it to humans?

SOURCE: www.verizon.com

Cyberthentic DataMagic

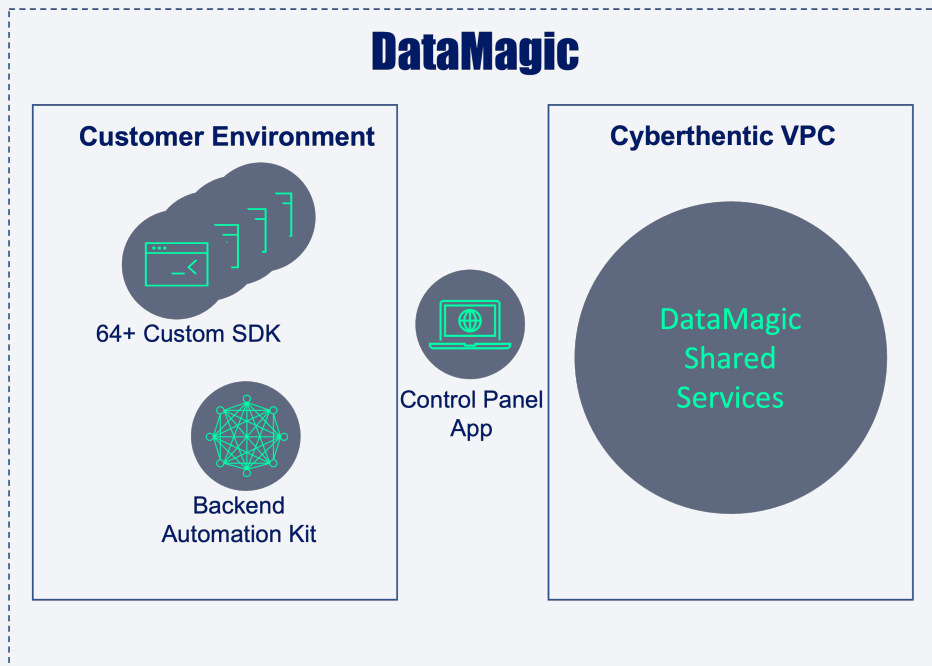


The only SaaS solution that automates all tasks to build and operate application integrations, eliminating human intervention.

It's based on three major innovations:

- Backend automation kit (BAK)—a downloadable custom resource package that supports a fixed-size mesh-style application network.
- Email-style application addresses exclude direct human participation in data security and transport.
- Low-code custom SDKs provide simple Java and JavaScript native functions, removing the need for advanced programming skills.

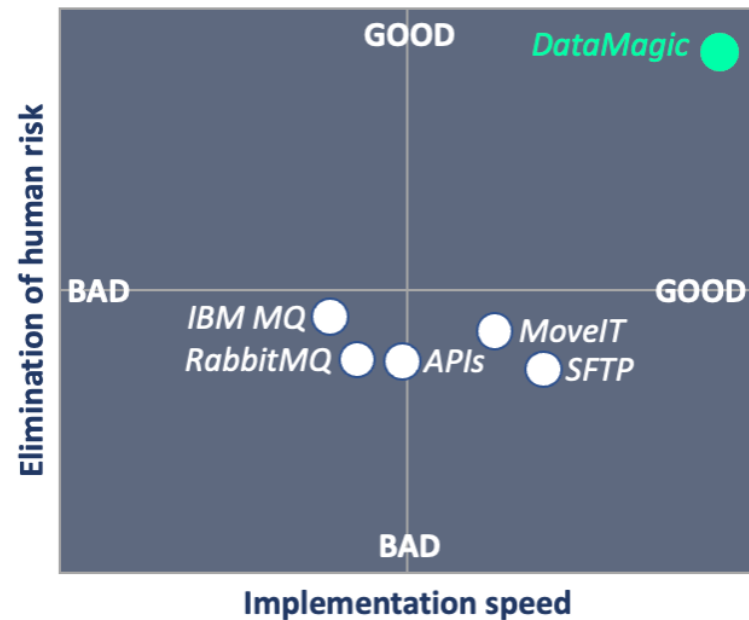
The Product Package



A DataMagic customer subscription includes:

- **Backend automation kit (BAK):** Downloadable resource package customized to automate secure data sharing for a fixed number of applications connected in a mesh-style network.
- **64+ Custom SDKs:** A pack of 64 or more Java and JavaScript libraries that programmers use to plug each application into the BAK.
- **Control Panel App:** A web app customers use to monitor and manage applications and integrations.
- **DataMagic Cloud Services:** Generate BAKs and orchestrate their operations, protecting customer data from exposure.

Unique Value Proposition

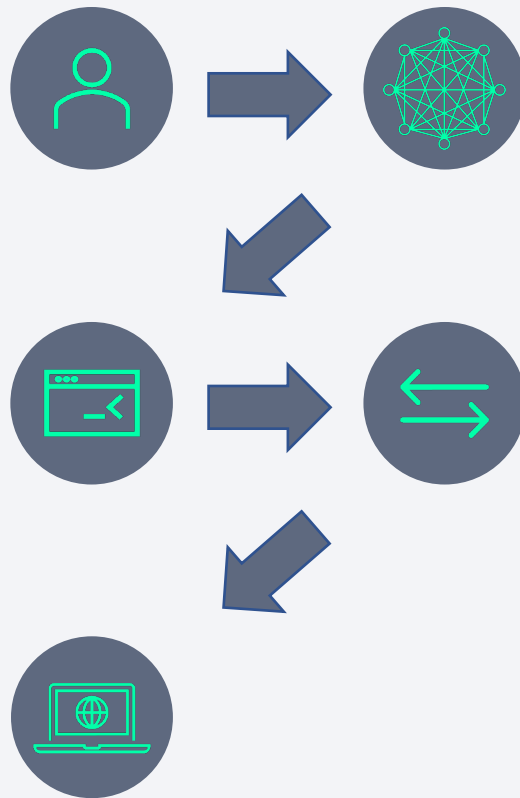


Unique security: No customer data is used, stored or exposed to humans when creating and operating application integrations.

High efficiency: DataMagic can be implemented in hours and applications can be connected or disconnected in seconds.

Simplicity: No advanced programming or application integration skills are required.

Implementation Takes Hours

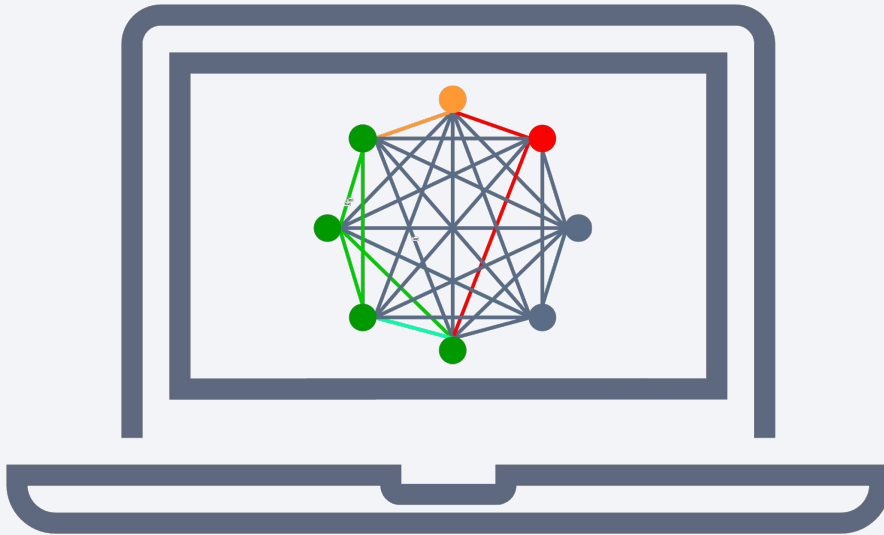


A new DataMagic customer can be implemented within hours, following a few simple steps.

1. Subscribe to DataMagic and create a customer account.
2. Download a backend automation kit.
3. Plug 2 or more applications into the application network using a different Custom SDK for each one.
4. Launch the applications to be connected.
5. Log into the Control Panel App and connect applications to start data flows.

After implementation, a customer uses the Control Panel App to manage applications and integrations.

Control Panel App

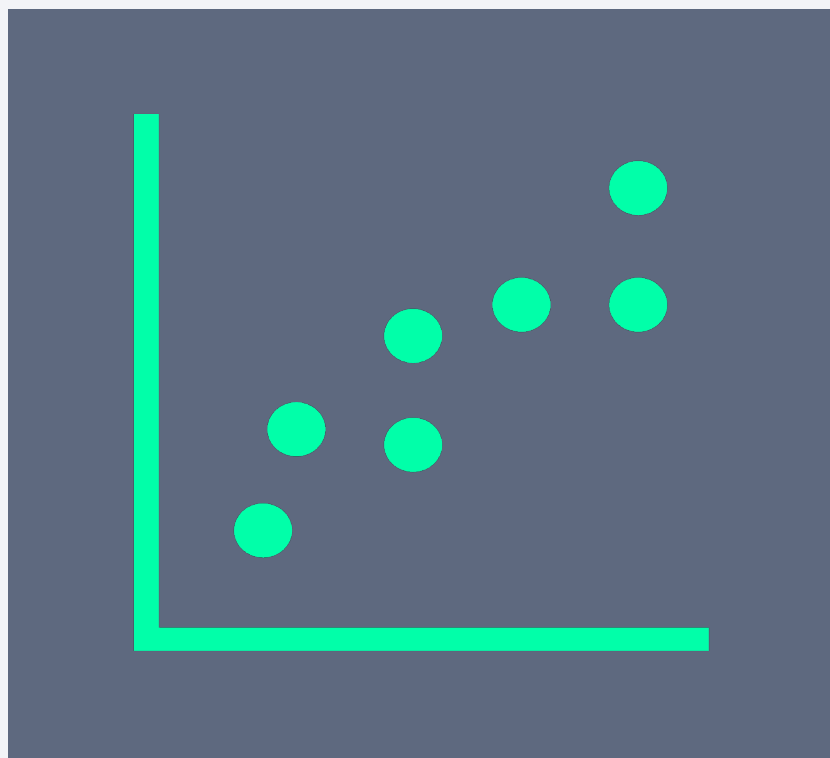


The Control Panel App is a browser app that enables Admin users to monitor and manage applications and integrations in 64+ node application network.

Control Panel App user features include:

- Download 64+ Custom SDKs
- Launch applications to be connected
- Connect applications to share data
- Disconnect applications to stop data sharing
- View application and integration statuses

What We Measure & Log



DataMagic monitors and logs all events and thresholds that are important for operations, compliance and audit. It neither collects nor logs any customer business or network data.

Examples:

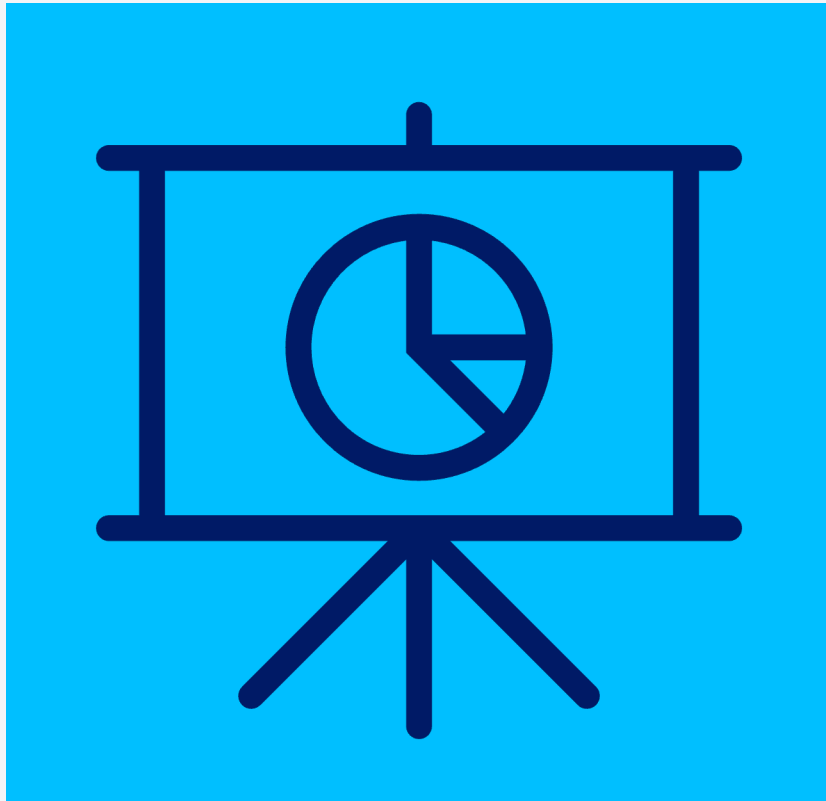
| | |
|----------------------------------|---------------------------------|
| • Delivery attempts (count) | • Data delivered sec (bytes) |
| • Successful deliveries (count) | • Data received per sec (bytes) |
| • Business data latency (secs) | • App activations (event) |
| • Throughput per sec OUT (bytes) | • App deactivations (event) |
| • Throughput per sec IN (bytes) | • Link activations (event) |
| • Data sent per sec (bytes) | • Link deactivations (event) |

Subscription Plans

Get up to 2,016 application integrations for less than US\$10K/month

| Standard | Premium |
|---|--|
| <p>Build secure process automation solutions using up to 64 applications which can share data in numerous possible workflow patterns.</p> | <p>Extend your process automation solutions to include over 64 independent applications in your environment and your partners' environments.</p> |
| <p>BENEFITS</p> <ul style="list-style-type: none"> • Support for up to 2,016 point-to-point integrations • Event-driven asynchronous data exchanges • Send-Only, Receive-Only and Simultaneous-Send/Receive connections • Universal data privacy compliance (HIPAA, GDPR, CCPA and others) • Business data flow multiplexing on one integration • Standard JSON data traffic • Extensive event logging • Support for internal A2A use cases • Application network management dashboard • Includes 500MB of transferred data per month (additional data volume can be subscribed) | <p>BENEFITS</p> <p>Everything in Standard plus:</p> <ul style="list-style-type: none"> • Support for over 2,016 point-to-point integrations • B2B and B2G cloud integration use cases • Alert notification for critical business messages • 2GB of transferred data per month (additional data volume can be subscribed) |
| <p>PRICING Call +1 (732) 639 4630</p> | <p>PRICING Call +1 (732) 639 4630</p> |

Allow Us To Show You!



Schedule a 30-min chat at:
www.cyberthentic.com

Schedule a free 40-hour no-obligation
POC by calling:
+1 (732) 639 4630

Send email inquiries to:
info@cyberthentic.com